



Annual Sponsorship Opportunities

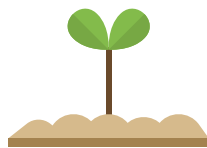
There are four annual sponsorship levels starting with the **Kauri Seed** at \$500, followed by the **Kauri Seedling** at \$1,750, the **Kauri Ricker** at \$5,000 and the **Forest Giant** at \$10,000 or higher.

All are available for one, two or three years.



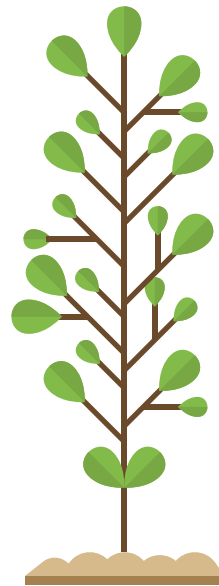
**Kauri
Seed**

\$500



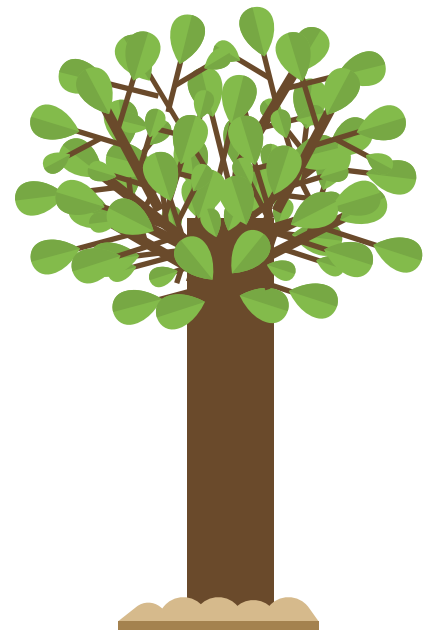
**Kauri
Seedling**

\$1,750



**Kauri
Ricker**

\$5,000



**Forest
Giant**

**\$10,000
or higher**

What your donation investment could be put towards:

Kauri Seed

\$500

Multilingual visitor guides/newsletters/communication.

Kauri Seedling

\$1,750

Building & grounds development/essential upkeep.

Kauri Ricker

\$5,000

Collections conservation/critical safekeeping of artefacts, treasures and taonga.

Forest Giant

\$10,000

or higher

Building new exhibitions/help us shape the future.

What benefits will you gain by investing in Kauri Museum's future:

Kauri Seed/ Kākano

10% off

purchases at
Gumdiggers Café

10% off

purchases at Kauri
Museum Store

Preferential entry/
previews for
exhibitions.

Kauri Seedling/ Tipu

10% off

purchases at
Gumdiggers Café

10% off

purchases at Kauri
Museum Store

Preferential entry/
previews for
exhibitions, gala
events and special
guest lectures.

Kauri Ricker/ Rākau

10% off

purchases at
Gumdiggers Café

10% off

purchases at Kauri
Museum Store

Preferential entry/
previews for
exhibitions, gala
events and special
guest lectures,
special invitations
to select Kauri
Museum events
and behind-the-
scenes tours.

Forest Giant/ Rākau nui

20% off

purchases at
Gumdiggers Café

20% off

purchases at Kauri
Museum Store

Preferential entry/
previews for
exhibitions, gala
events and special
guest lectures,
special invitations
to select Kauri
Museum events
and behind-the-
scenes tours,
recognition on the
new Donor Board
in Kauri Museum
entrance hall.

Please note you can claim tax credits for donations you make to approved organisations, such as registered charities and schools. Kauri Museum is a registered charity #CC32488. Please ask for a donation receipt if required.

Please contact amanda.bennett@kaurimuseum.com or call Amanda on 021 422 530.